



Smarten up with the Smart Oil Gauge™

Remote Monitoring:
Check your tank from your phone.



Low-Level Alerts:
Text and e-mail alerts when the tank is low.



Save Money:
Track your consumption to save on heating oil.



Smart Oil Gauge™

The heating oil gauge - *reinvented*



“Great Product! Fantastic way for me to monitor our oil usage, love it!!!”

— Kathryn W.

“This has worked flawlessly. I had a technical issue on my end and their support staff walked me through everything I needed to know. It works exactly as advertised and is significantly more accurate than my old float gauge. Best part is that it’s ultrasonic, so I don’t need to drop it inside my tank.”

— Frank B.

“So far so good. Great product working as advertised. Installed in minutes. Easy to set up. Accurate in reading the tank level. Enables me to monitor my fuel oil tank when out of town and avoid a dry tank.”

— Myles E.

“This is how tanks should be gauged.”

— Chris M.

TOP TIER ENERGY

**385 South Main Street
Southbury, CT 06488**

smartoilgauge.com

Wi-Fi Ultrasonic Heating Oil Gauge



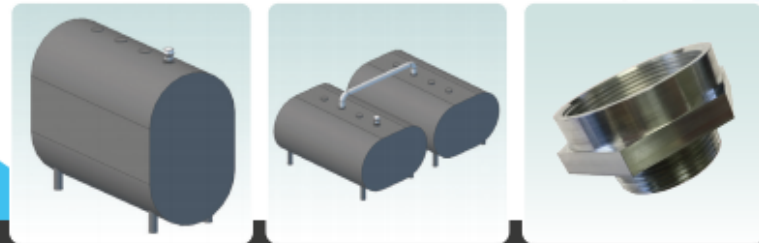
Features & Benefits

- Remote Monitoring:** Check your tank from your phone — anytime, anywhere. Works with iOS and Android devices, as well as any laptop or PC.
- Low-Level Alerts:** Receive text and e-mail alerts when the tank is getting low and it's time to order oil.
- Replaceable Batteries:** Lithium batteries last 1-2 years, and are easily replaceable. Plus, the device will tell you when they're getting low.
- Energy-Efficiency:** Track your oil consumption to see how much fuel you save by lowering the thermostat a degree or two.



Tank Types:

138, 220, 240, 275, or 330 gallon, single or side-by-side, vertical or horizontal, indoor or outdoor. 1.5" NPT adapter available. Off-the-shelf adapter will not work. ABOVE GROUND TANKS ONLY.



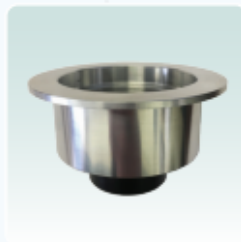
Vertical or Horizontal

Single or Side-by-Side

1.5" NPT Adapter

Specifications:

Roth DWT Tanks: Roth Adapter required. Compatible with 400L, 620L, 1000L, and 1000LH. Not compatible with 1500L.



Roth Adapter

Communication: Wi-Fi
2.4 GHz

Fitting: 2" NPT (1.5" adapter available)

Batteries: 3.6V Lithium AA (2x)

Sensor Type: Ultrasonic

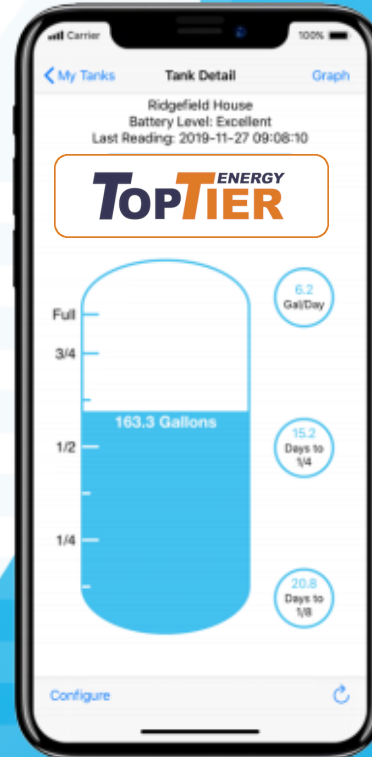
TopTier^{ENERGY}

203-659-2696

JUST ASK
amazon alexa

"Alexa, ask Smart Oil Gauge how much heating oil we have left."

"When will we need to order oil next?"



Monitor your oil consumption and adjust heating patterns to save money on heating oil.

